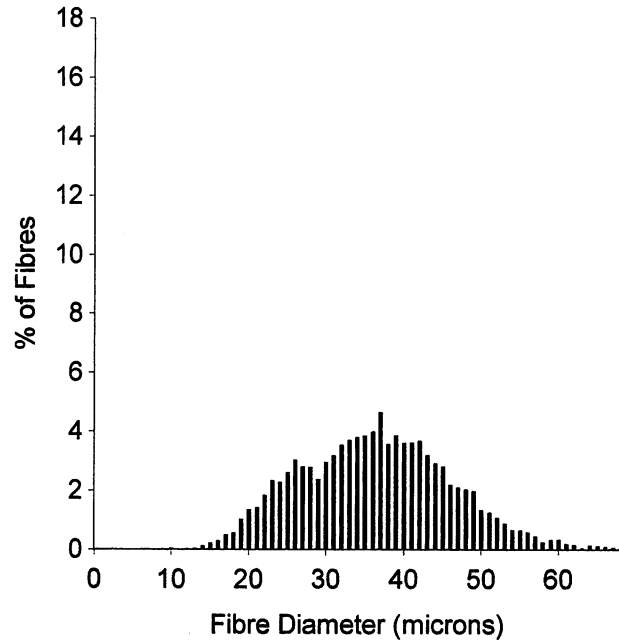


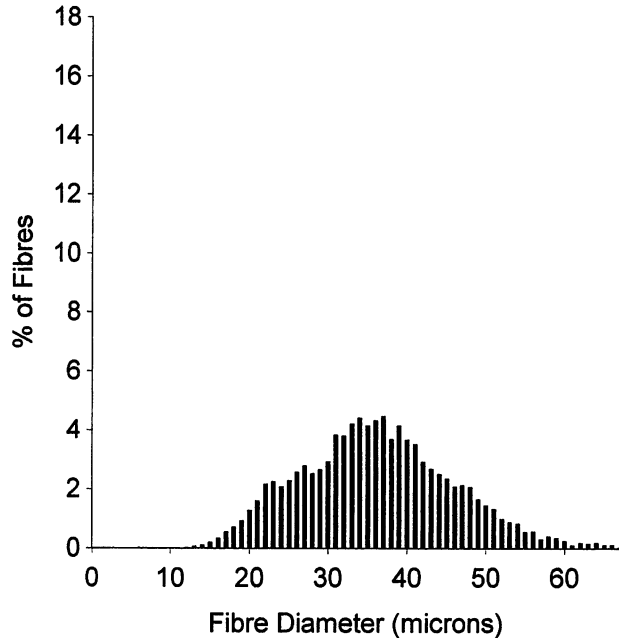
OFDA 2000 REPORT
Local Cloth 12/22/2020 (12Records)



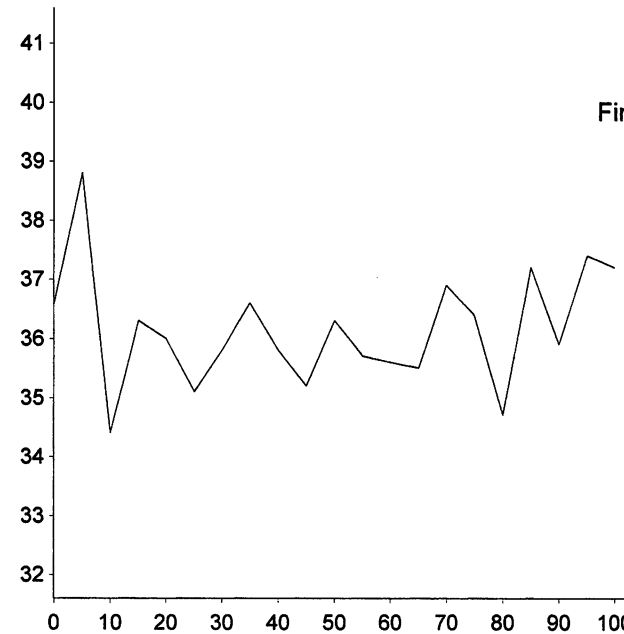
EID :
EarTag : Hobby Kno
MicRank : 12
Micron : 36.3 mic
MicDev : +7.9 mic
SD : 9.7 mic
CVD : 26.7 %
CEM : 16.8 mic
<15 : 0.3 %
CF : 28.8 %
SF : 37.3 mic
CRV : 24.1 Dg/mm
SDC : 25.9 Dg/mm



Staple Len : 95.0 mm
Min Mic : 34.7 mic
Max Mic : 37.5 mic
Finest Point From Tip : 20.0 mm
Fibre Ends : 0.5 mic
SD Along : 0.70 mic

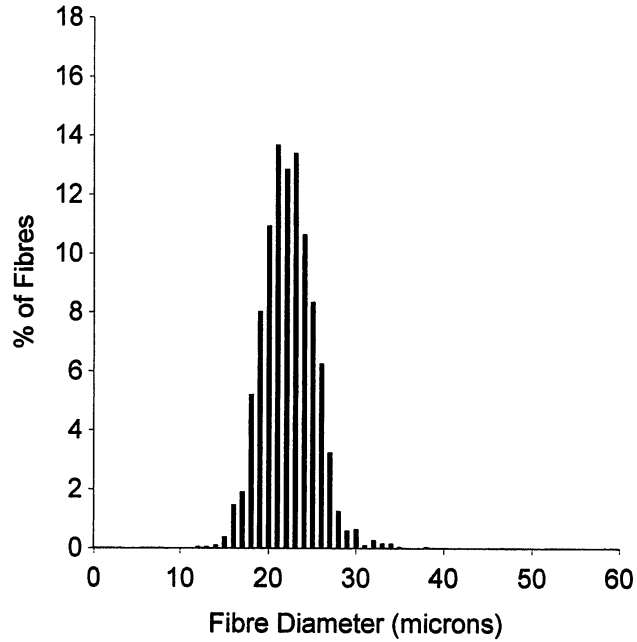


EID :
EarTag : Hobby Kno
MicRank : 11
Micron : 36.1 mic
MicDev : +7.7 mic
SD : 9.6 mic
CVD : 26.7 %
CEM : 17.1 mic
<15 : 0.2 %
CF : 28.2 %
SF : 37.1 mic
CRV : 24.9 Dg/mm
SDC : 27.7 Dg/mm

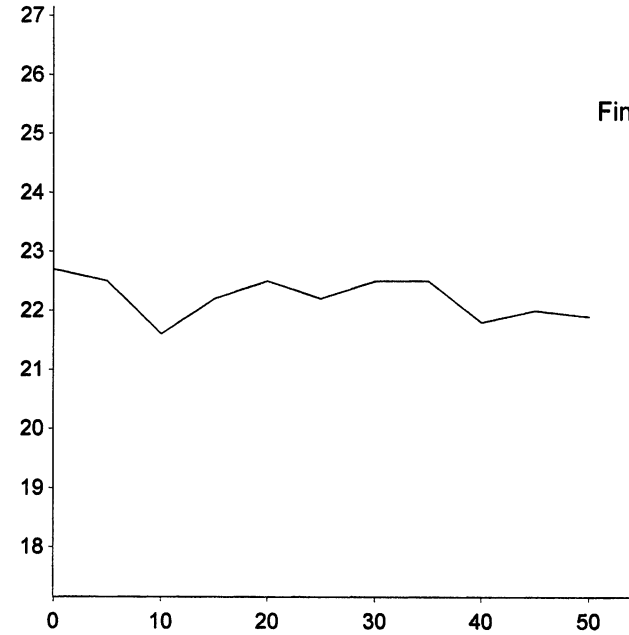


Staple Len : 105.0 mm
Min Mic : 34.4 mic
Max Mic : 38.8 mic
Finest Point From Tip : 10.0 mm
Fibre Ends : 0.8 mic
SD Along : 1.00 mic

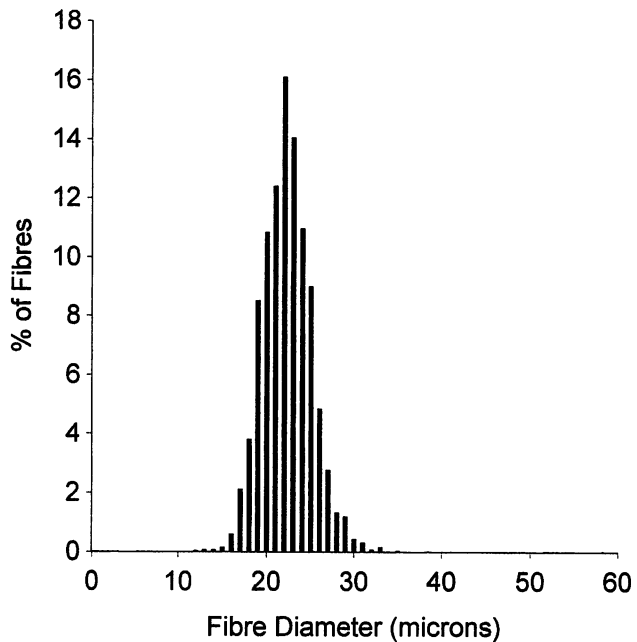
OFDA 2000 REPORT
Local Cloth 12/22/2020 (12Records)



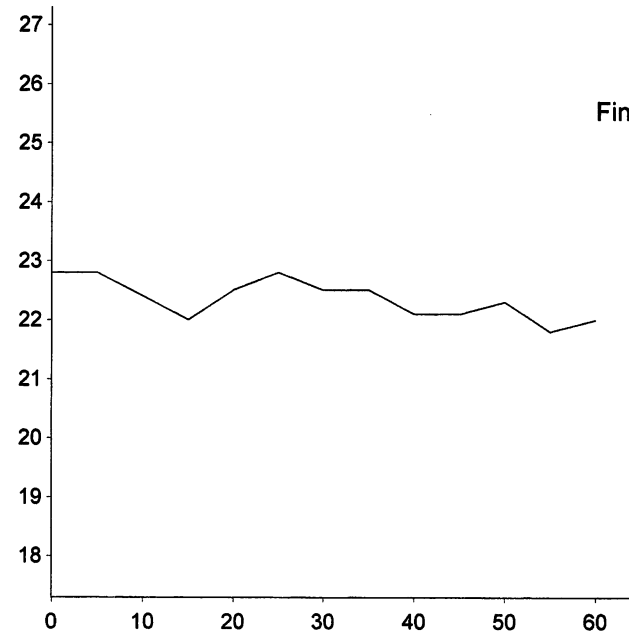
EID :
EarTag : Susan P R
MicRank : 1
Micron : 22.2 mic
MicDev : -6.2 mic
SD : 3.0 mic
CVD : 13.3 %
CEM : 5.3 mic
<15 : 0.2 %
CF : 99.2 %
SF : 20.4 mic
CRV : 79.8 Dg/mm
SDC : 61.3 Dg/mm



Staple Len : 55.0 mm
Min Mic : 21.6 mic
Max Mic : 22.7 mic
Finest Point From Tip : 10.0 mm
Fibre Ends : 0.1 mic
SD Along : 0.40 mic

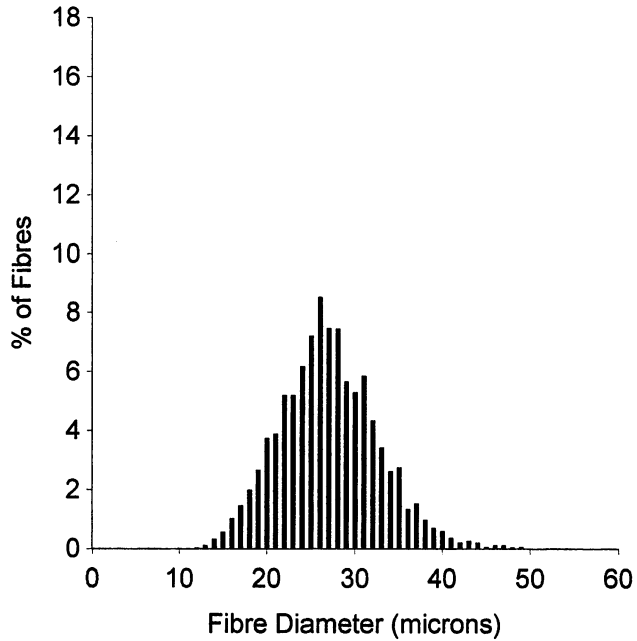


EID :
EarTag : Susan P R
MicRank : 2
Micron : 22.3 mic
MicDev : -6.1 mic
SD : 2.8 mic
CVD : 12.4 %
CEM : 5.2 mic
<15 : 0.2 %
CF : 99.4 %
SF : 20.4 mic
CRV : 83.1 Dg/mm
SDC : 62.9 Dg/mm

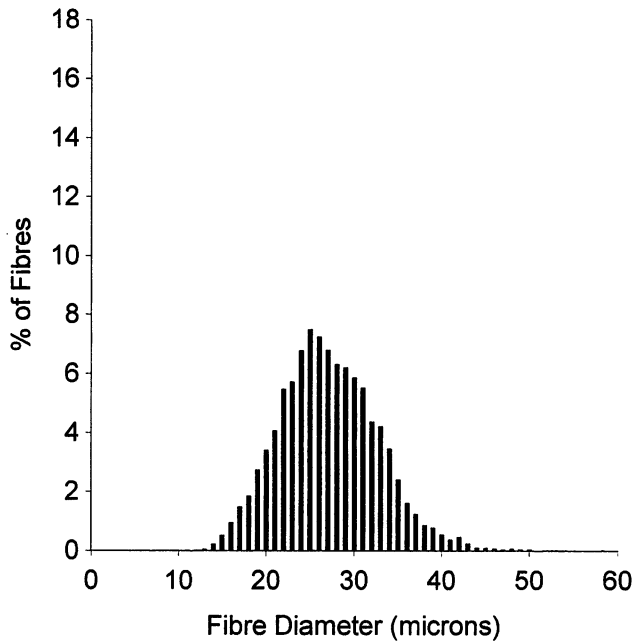
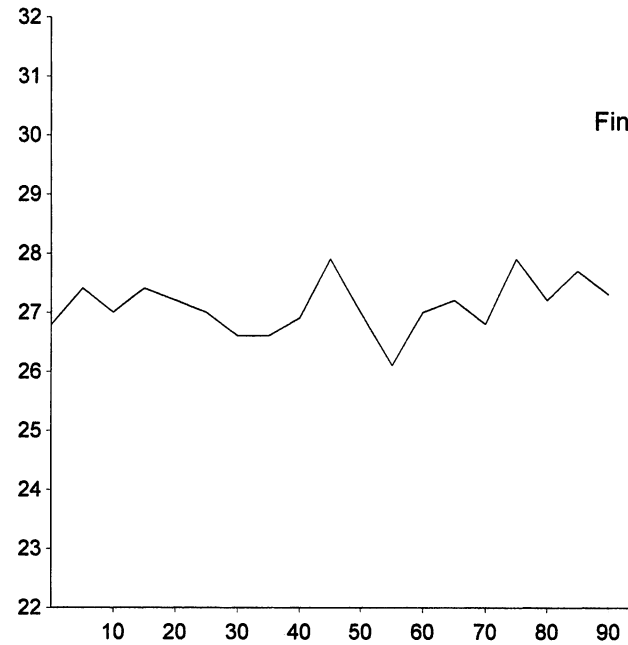


Staple Len : 65.0 mm
Min Mic : 21.8 mic
Max Mic : 22.8 mic
Finest Point From Tip : 55.0 mm
Fibre Ends : 0.1 mic
SD Along : 0.30 mic

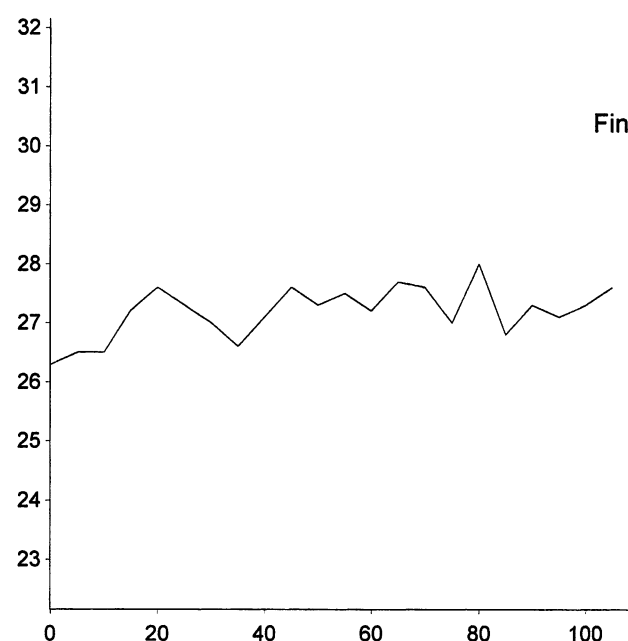
OFDA 2000 REPORT
Local Cloth 12/22/2020 (12Records)



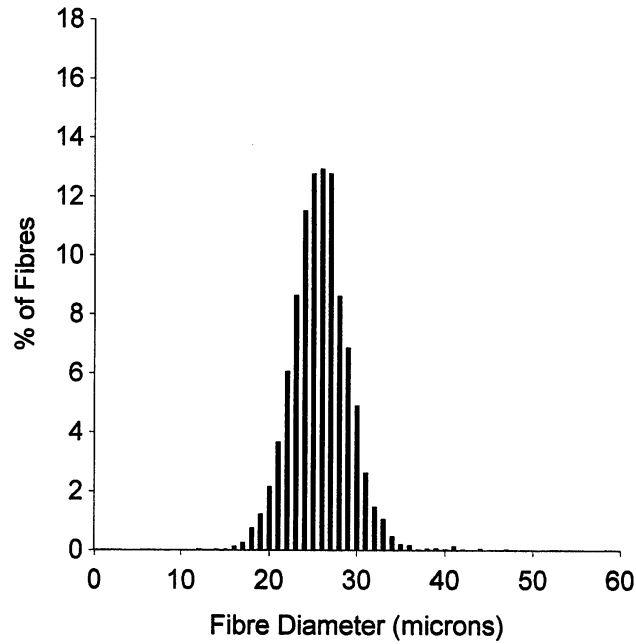
EID :
EarTag : Hobby Kno
MicRank : 5
Micron : 27.0 mic
MicDev : -1.4 mic
SD : 5.6 mic
CVD : 20.8 %
CEM : 10.2 mic
<15 : 0.5 %
CF : 74.2 %
SF : 26.3 mic
CRV : 57.6 Dg/mm
SDC : 46.5 Dg/mm



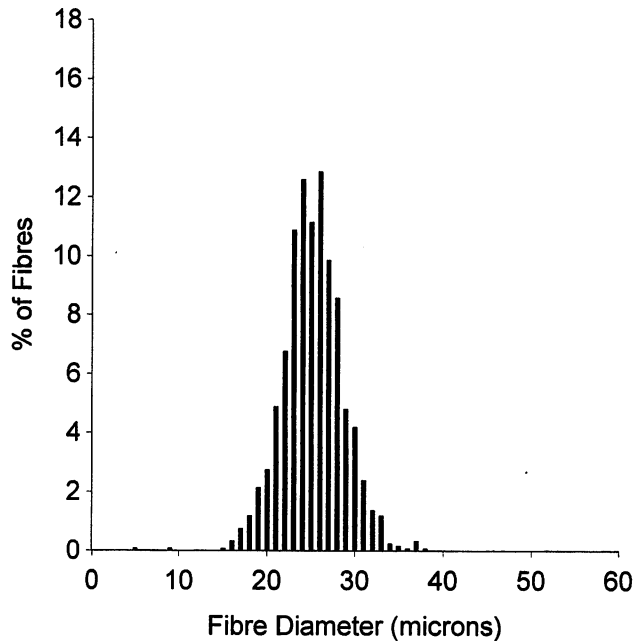
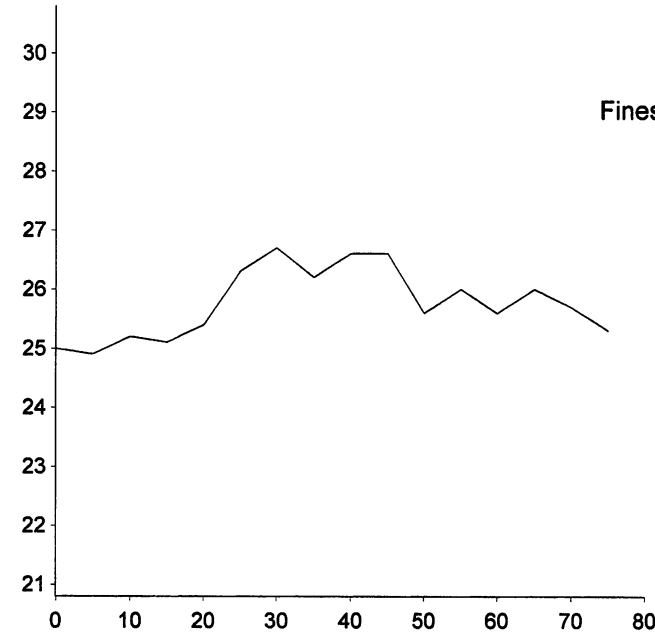
EID :
EarTag : Hobby Kno
MicRank : 6
Micron : 27.1 mic
MicDev : -1.3 mic
SD : 5.6 mic
CVD : 20.6 %
CEM : 9.9 mic
<15 : 0.3 %
CF : 73.3 %
SF : 26.3 mic
CRV : 56.7 Dg/mm
SDC : 45.7 Dg/mm



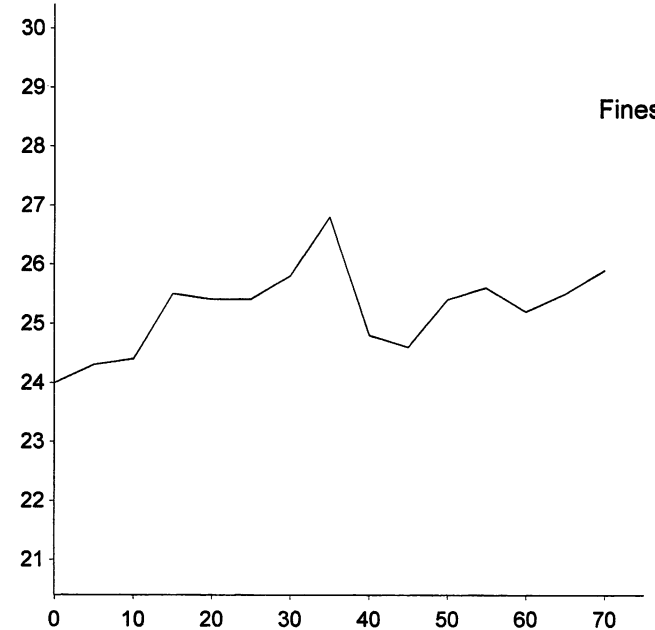
OFDA 2000 REPORT
Local Cloth 12/22/2020 (12Records)



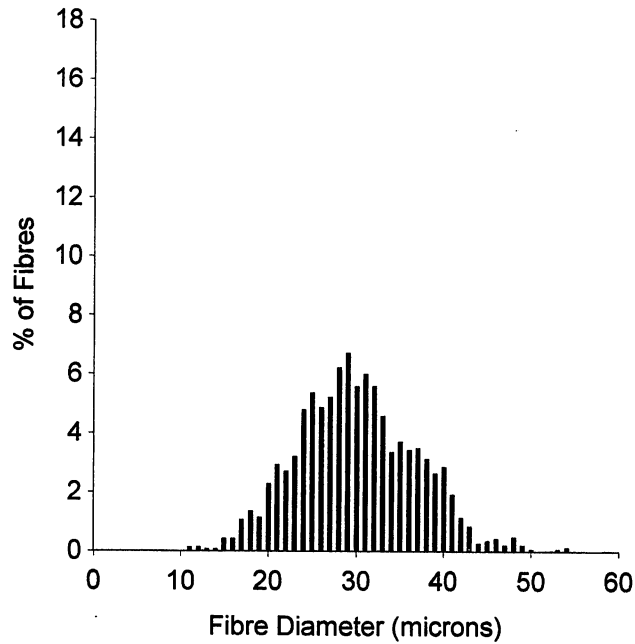
EID :
EarTag : Martha Ow
MicRank : 4
Micron : 25.8 mic
MicDev : -2.6 mic
SD : 3.3 mic
CVD : 12.8 %
CEM : 5.8 mic
<15 : 0.1 %
CF : 93.5 %
SF : 23.6 mic
CRV : 77.8 Dg/mm
SDC : 55.7 Dg/mm



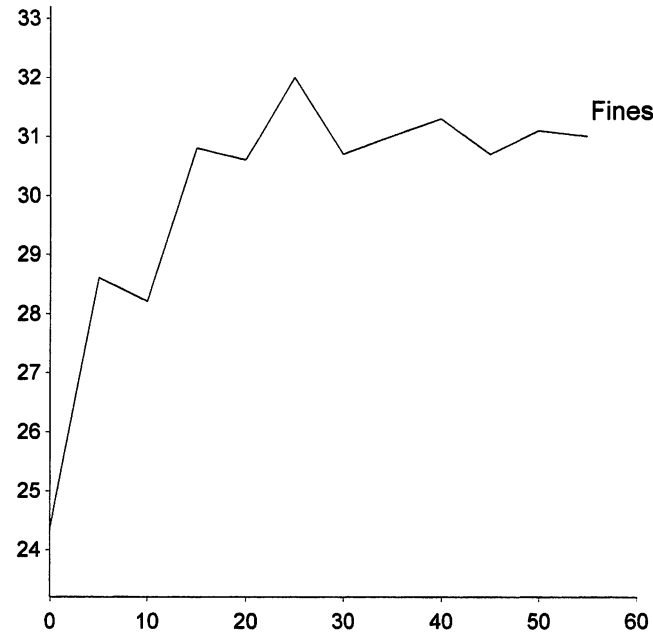
EID :
EarTag : Martha Ow
MicRank : 3
Micron : 25.2 mic
MicDev : -3.2 mic
SD : 3.5 mic
CVD : 13.7 %
CEM : 6.2 mic
<15 : 0.2 %
CF : 94.1 %
SF : 23.2 mic
CRV : 78.5 Dg/mm
SDC : 62.0 Dg/mm



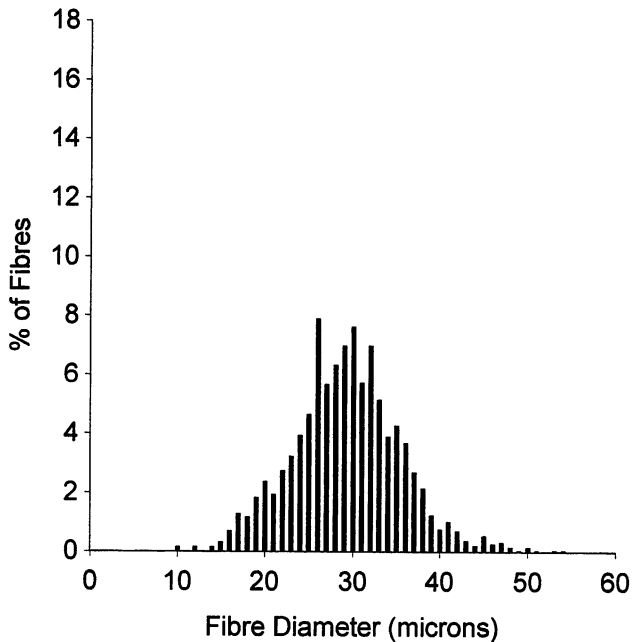
OFDA 2000 REPORT
Local Cloth 12/22/2020 (12Records)



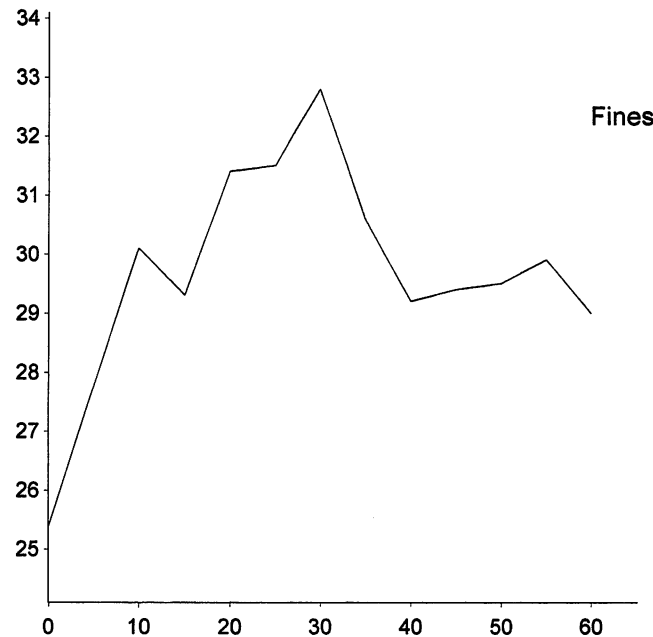
EID :
EarTag : Kate D BF
MicRank : 10
Micron : 30.0 mic
MicDev : +1.6 mic
SD : 6.7 mic
CVD : 22.5 %
CEM : 11.6 mic
<15 : 0.4 %
CF : 54.9 %
SF : 29.6 mic
CRV : 45.6 Dg/mm
SDC : 38.4 Dg/mm



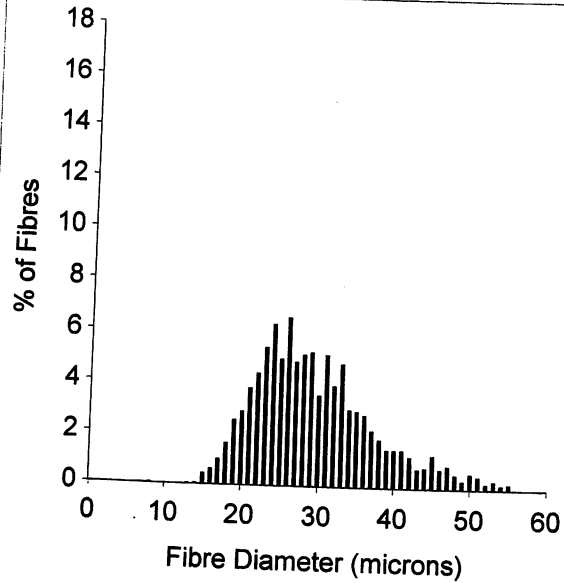
Staple Len : 60.0 mm
Min Mic : 24.4 mic
Max Mic : 32.0 mic
Finest Point From Tip : 0 mm
Fibre Ends : -2.3 mic
SD Along : 2.10 mic



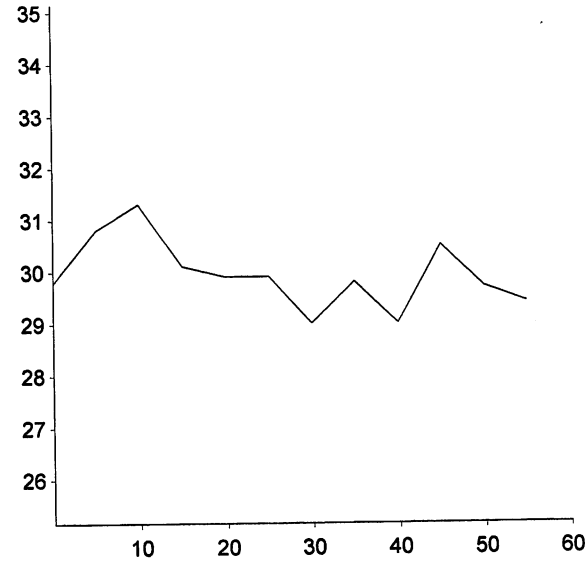
EID :
EarTag : Kate D BF
MicRank : 7
Micron : 29.3 mic
MicDev : +0.9 mic
SD : 6.2 mic
CVD : 21.1 %
CEM : 10.5 mic
<15 : 0.5 %
CF : 59.4 %
SF : 28.5 mic
CRV : 46.7 Dg/mm
SDC : 37.0 Dg/mm



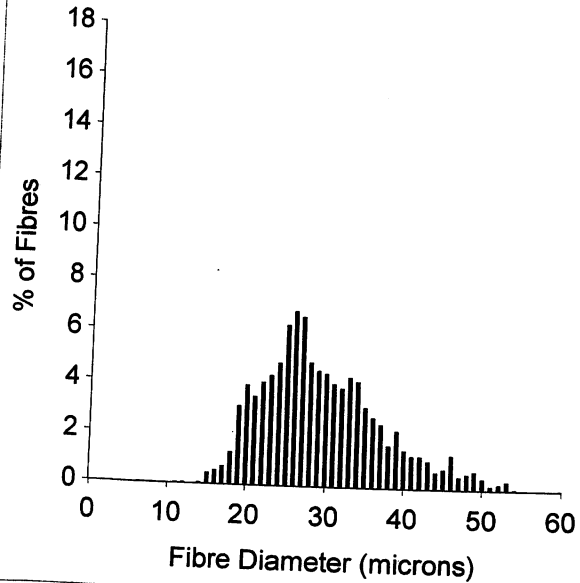
Staple Len : 65.0 mm
Min Mic : 25.4 mic
Max Mic : 32.8 mic
Finest Point From Tip : 0 mm
Fibre Ends : -2.1 mic
SD Along : 1.80 mic



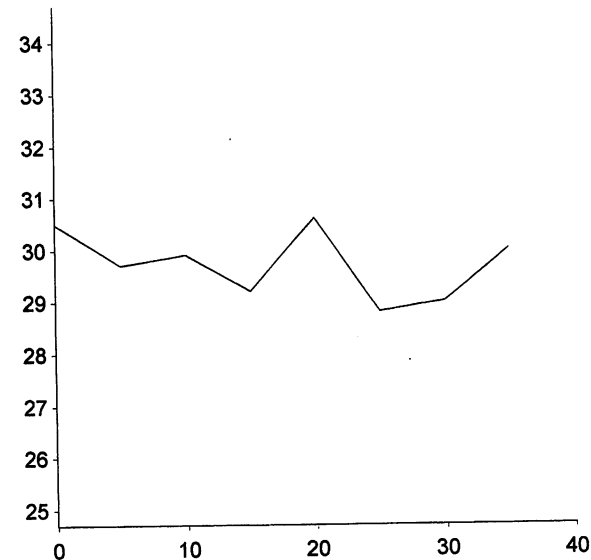
EID :
EarTag : Tunis Well
MicRank : 9
Micron : 29.6 mic
MicDev : +1.2 mic
SD : 7.9 mic
CVD : 26.6 %
CEM : 16.2 mic
<15 : 0.1 %
CF : 59.7 %
SF : 30.3 mic
CRV : 70.9 Dg/mm
SDC : 52.2 Dg/mm



Staple Len : 60.0 mm
Min Mic : 29.0 mic
Max Mic : 31.3 mic
Finest Point From Tip : 30.0 mm
Fibre Ends : 0 mic
SD Along : 0.70 mic



EID :
EarTag : Tunis Well
MicRank : 8
Micron : 29.5 mic
MicDev : +1.1 mic
SD : 7.6 mic
CVD : 25.7 %
CEM : 15.6 mic
<15 : 0.2 %
CF : 60.4 %
SF : 30.0 mic
CRV : 67.9 Dg/mm
SDC : 55.2 Dg/mm



Staple Len : 40.0 mm
Min Mic : 28.8 mic
Max Mic : 30.6 mic
Finest Point From Tip : 25.0 mm
Fibre Ends : 0.8 mic
SD Along : 0.70 mic