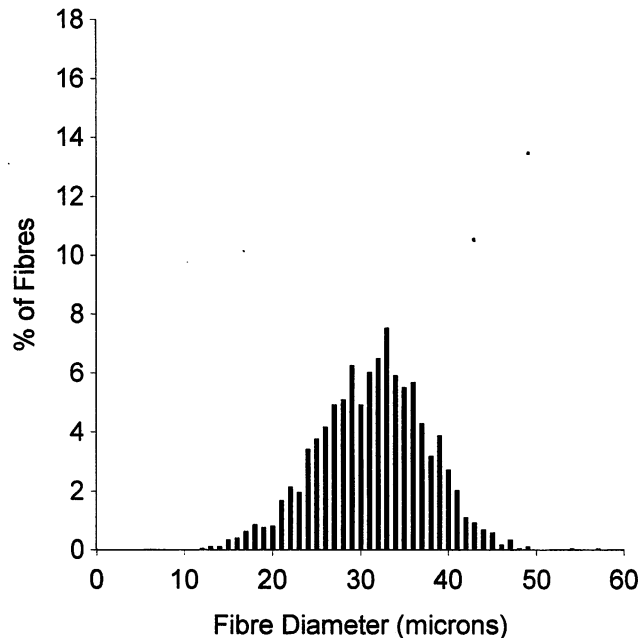
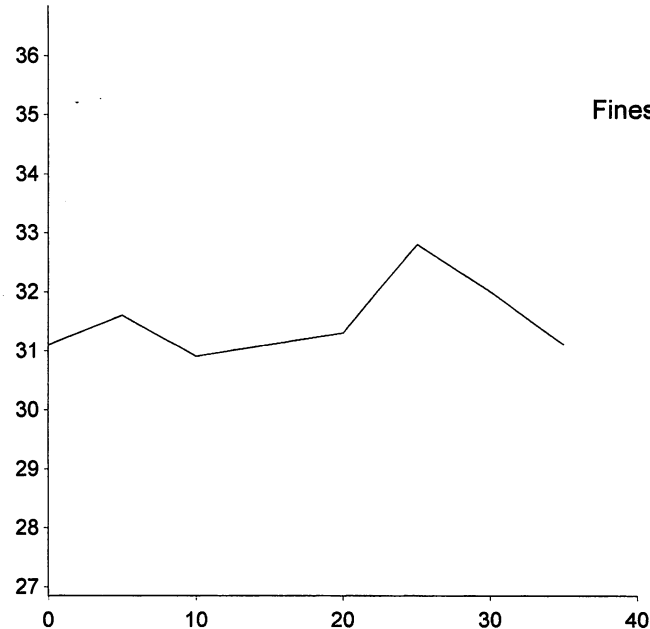


OFDA 2000 REPORT
Local Cloth 2/21/21 (8Records)

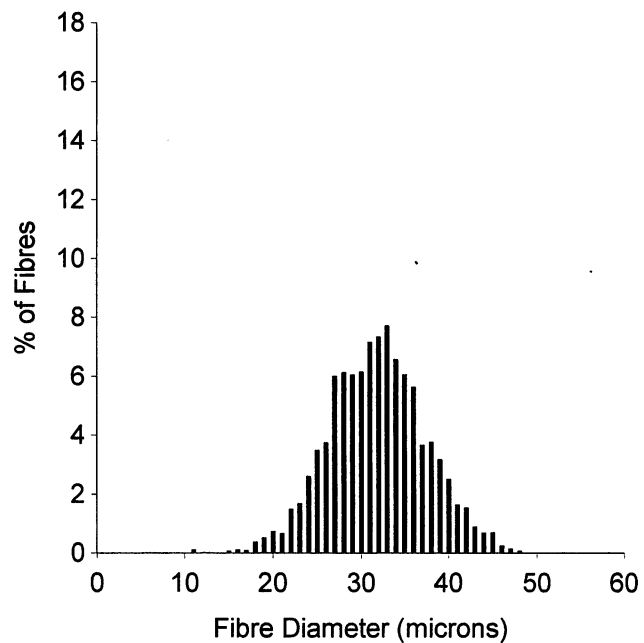
Feb 2021



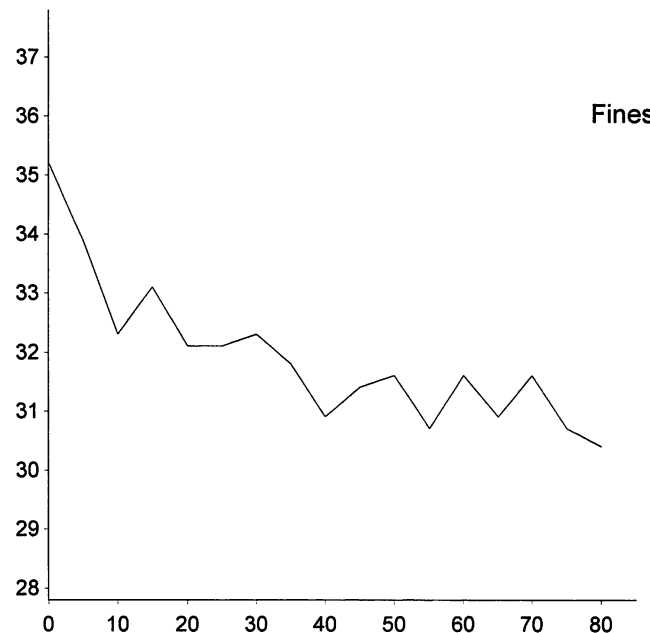
EID :
EarTag : Border Lei
MicRank : 6
Micron : 31.4 mic
MicDev : +4.0 mic
SD : 6.2 mic
CVD : 19.7 %
CEM : 10.2 mic
<15 : 0.3 %
CF : 42.5 %
SF : 30.2 mic
CRV : 39.3 Dg/mm
SDC : 34.7 Dg/mm



Staple Len : 40.0 mm
Min Mic : 30.9 mic
Max Mic : 32.8 mic
Finest Point From Tip : 10.0 mm
Fibre Ends : -0.3 mic
SD Along : 0.60 mic



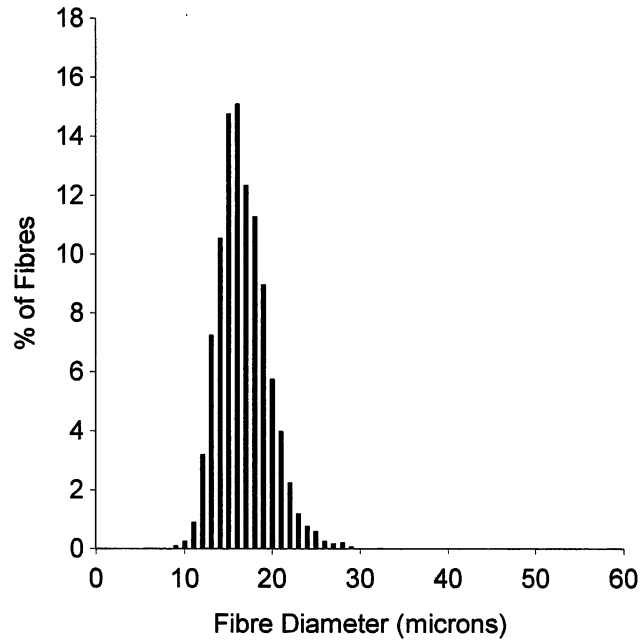
EID :
EarTag : Border Leic
MicRank : 7
Micron : 31.9 mic
MicDev : +4.5 mic
SD : 5.5 mic
CVD : 17.4 %
CEM : 9.8 mic
<15 : 0.1 %
CF : 40.2 %
SF : 30.1 mic
CRV : 39.4 Dg/mm
SDC : 35.0 Dg/mm



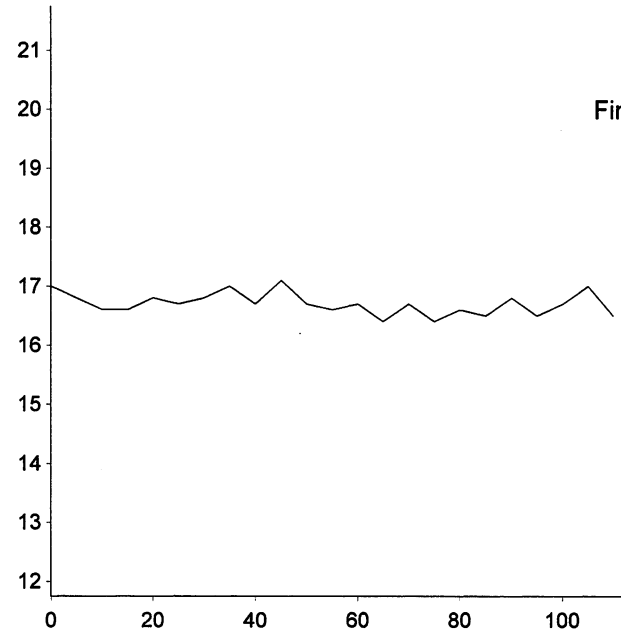
Staple Len : 85.0 mm
Min Mic : 30.4 mic
Max Mic : 35.2 mic
Finest Point From Tip : 80.0 mm
Fibre Ends : 0.9 mic
SD Along : 1.20 mic

OFDA 2000 REPORT
Local Cloth 2/21/21 (8Records)

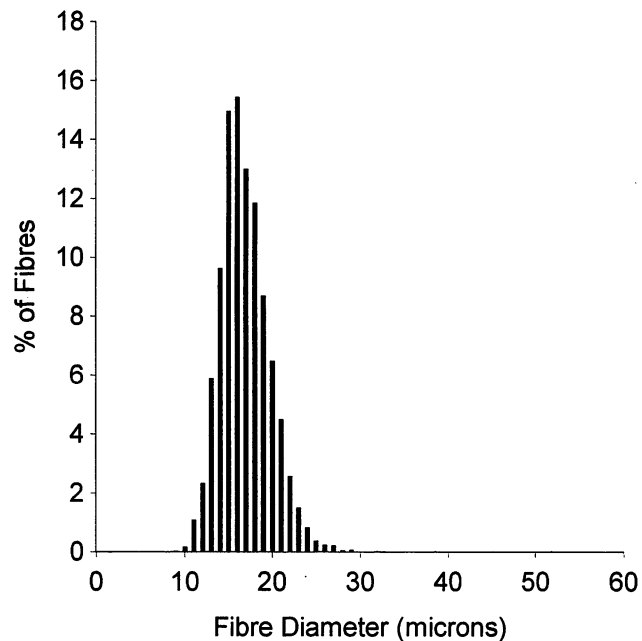
Feb 2021



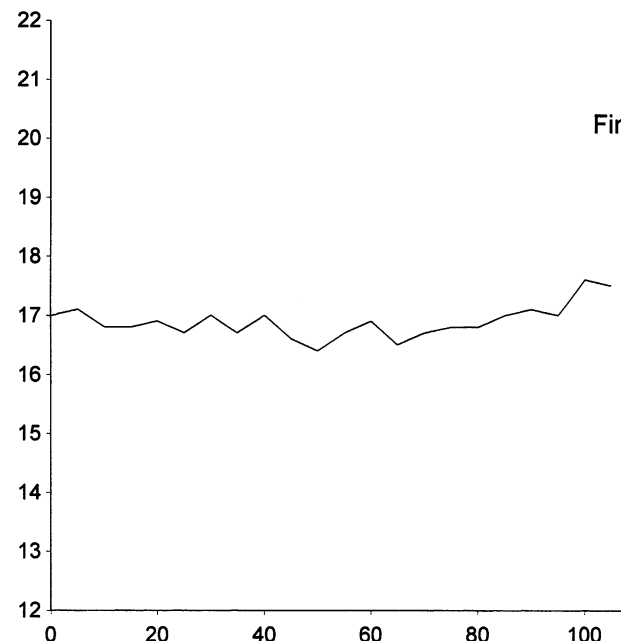
EID :
EarTag : Merino Top
MicRank : 1
Micron : 16.7 mic
MicDev : -10.7 mic
SD : 2.9 mic
CVD : 17.2 %
CEM : 5.5 mic
<15 : 22.3 %
CF : 100.0 %
SF : 15.8 mic
CRV : 56.8 Dg/mm
SDC : 48.9 Dg/mm



Staple Len : 115.0 mm
Min Mic : 16.4 mic
Max Mic : 17.1 mic
Finest Point From Tip : 65.0 mm
Fibre Ends : 0 mic
SD Along : 0.20 mic

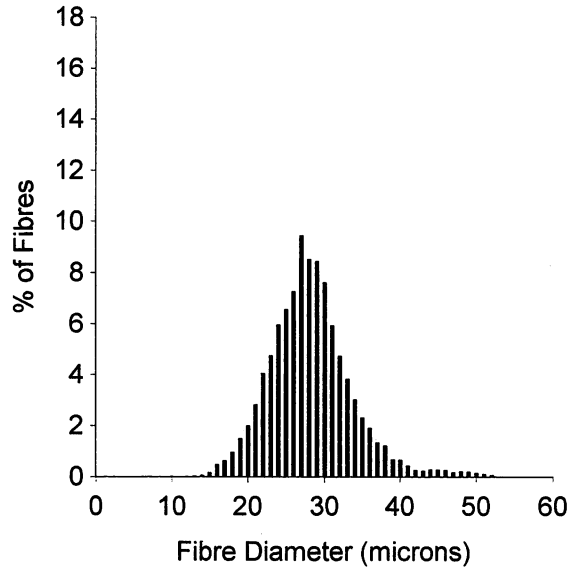


EID :
EarTag : Merino Top
MicRank : 2
Micron : 16.9 mic
MicDev : -10.5 mic
SD : 2.8 mic
CVD : 16.6 %
CEM : 5.5 mic
<15 : 19.2 %
CF : 100.0 %
SF : 15.8 mic
CRV : 55.7 Dg/mm
SDC : 45.7 Dg/mm

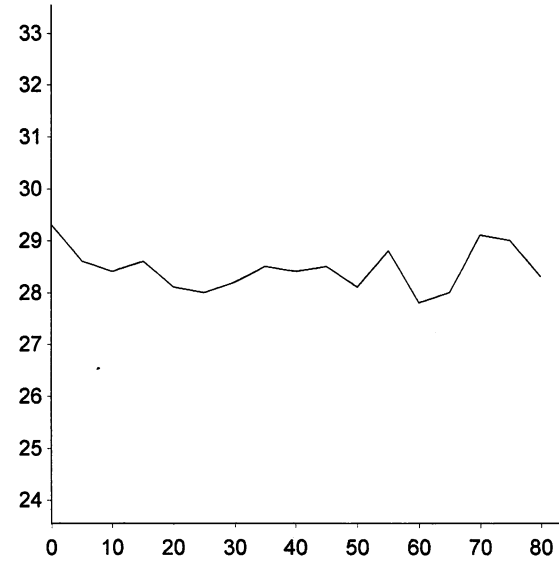


Staple Len : 110.0 mm
Min Mic : 16.4 mic
Max Mic : 17.6 mic
Finest Point From Tip : 50.0 mm
Fibre Ends : 0.4 mic
SD Along : 0.30 mic

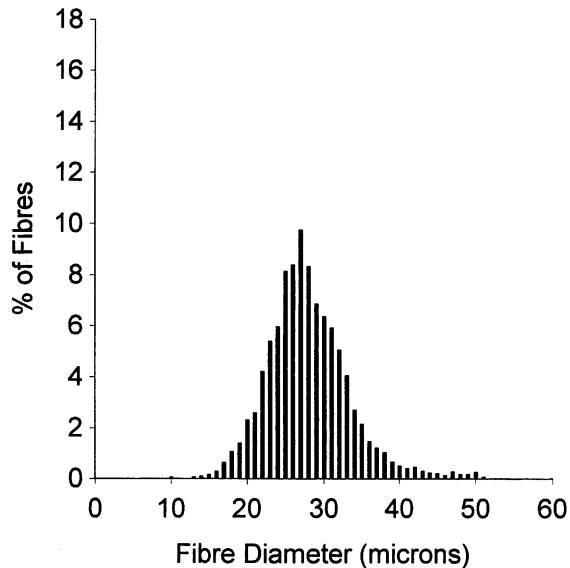
Feb 2021



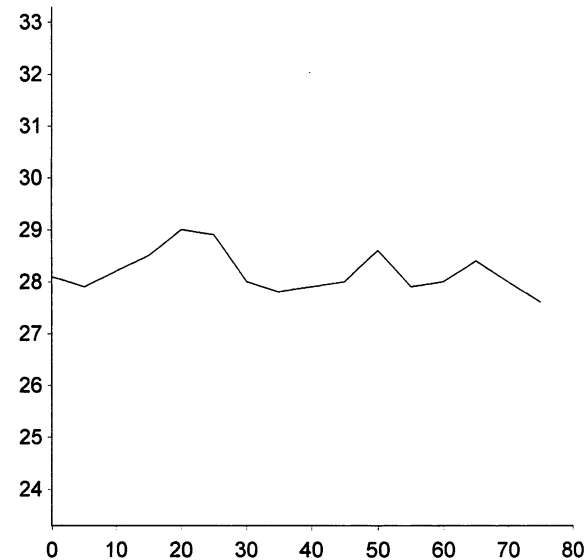
EID :
 EarTag : Mohair Rov
 MicRank : 5
 Micron : 28.3 mic
 MicDev : +0.9 mic
 SD : 5.5 mic
 CVD : 19.6 %
 CEM : 10.1 mic
 <15 : 0.2 %
 CF : 71.5 %
 SF : 27.2 mic
 CRV : 24.6 Dg/mm
 SDC : 24.8 Dg/mm



Staple Len : 85.0 mm
 Min Mic : 27.8 mic
 Max Mic : 29.3 mic
 Finest Point From Tip : 60.0 mm
 Fibre Ends : 0.5 mic
 SD Along : 0.40 mic



EID :
 EarTag : Mohair Rov
 MicRank : 4
 Micron : 28.0 mic
 MicDev : +0.6 mic
 SD : 5.5 mic
 CVD : 19.6 %
 CEM : 10.0 mic
 <15 : 0.3 %
 CF : 72.3 %
 SF : 26.9 mic
 CRV : 26.0 Dg/mm
 SDC : 28.0 Dg/mm



Staple Len : 80.0 mm
 Min Mic : 27.6 mic
 Max Mic : 29.0 mic
 Finest Point From Tip : 75.0 mm
 Fibre Ends : -0.2 mic
 SD Along : 0.40 mic